

Easystar

ColorHunter with Smart Dual-Light

Smart IR & Color Switching, Dual-way Communication

Guard your safety quietly

Don't worry about power consumption and light pollution.

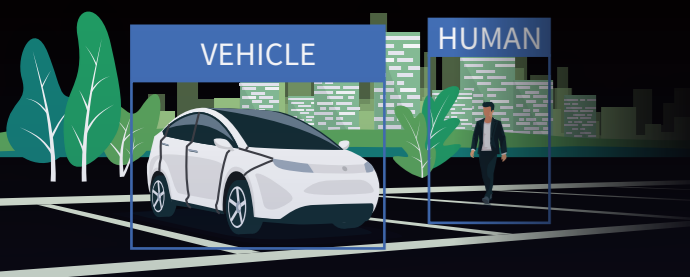
EasyStar Smart Dual-light series cameras will quietly guard your safety and they won't disturb your daily life. They only turn on the warm light when detecting people or vehicles.



Detect intruders in real time

EasyStar Smart Dual-light series IP cameras are equipped with intelligent infrared, warm light and ultra motion detection(UMD) function, which can accurately detect people and vehicles.

In smart dual-light mode, the infrared light is always on, providing invisible protection. When people and vehicles intrude, the warm light will be turned on immediately. Thanks to the built-in mic and speaker, you can communicate with them.



ColorHunter Smart Dual Light

Use UMD technology for precise target detection, enjoy color recording when target is detected, and invisible guardianship when no events happen.

Built-in speaker for two-way communication.

No events

- IR on
- Offer silent guardianship

Events detected

- Warm light on
- Offer colorful images



EasyBasic

ColorHunter with warm light

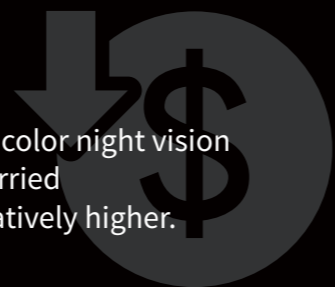
The Cheapest ColorHunter IP Camera Ever

Cost-effective

When camera supports color night vision function, we always worried that its price will be relatively higher.

Now, don't worry.

EasyBasic ColorHunter cameras are entry-level choice to bring you 7/24 colorful image at a super low price.

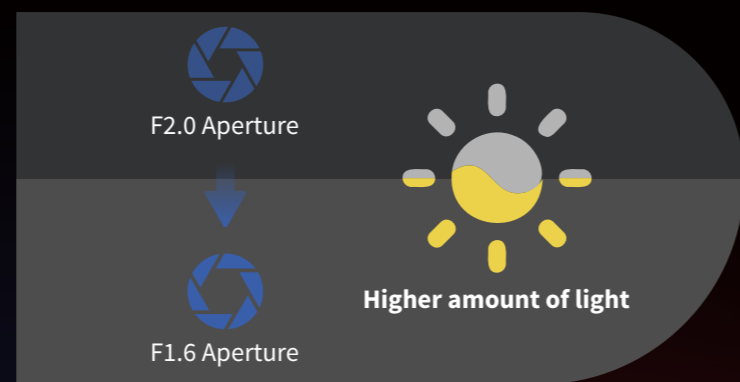


F1.6 aperture

EasyBasic ColorHunter cameras are equipped with F1.6 aperture, and the minimum illumination requirement can reach 0.005lux.

After turning on the warm light in the range of 30m(98ft), it can provide full-day colorful images.

More importantly, you can install these exquisite cameras at very friendly cost.



24/7 colorful safety guard

Friendly warm LEDs can act as a lamp that can prevent accidents caused by insufficient light at night.



EasyStar

ColorHunter with warm light

Enhanced Image Performance

Never miss details

When night falls, it is difficult for traditional cameras to capture clear information in the dark, the image is blurred and details are missing.

Now, here comes the UNV EasyStar ColorHunter IP cameras, with large sensor & super big aperture.

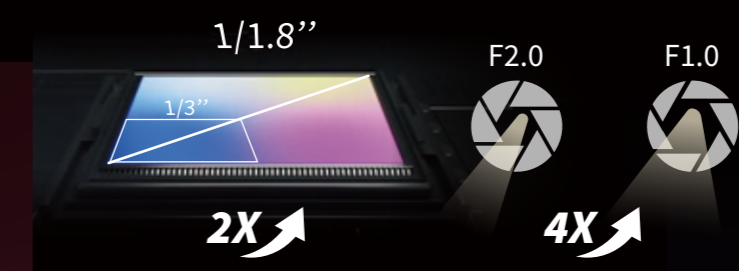
Turn on the warm light, enjoy 24/7 colorful image.



Ultra low light imaging

EasyStar ColorHunter cameras have 1/1.8-inch large sensor and super aperture of F1.0.

The minimum illumination requirement for night imaging can reach 0.0005 lux, and with the warm light in range of 30m, they can capture every detail at night.



Capture the night in vivid color even without supplementary light. Our camera's big aperture and sensor bring out the crystal-clear details.

Product Showcase

EasyStar ColorHunter with Smart Dual Light

IPC2122LE-ADF28(40)KMC-WL



- 1/2.8" CMOS sensor
- 2MP 1920X1080 30 fps
- Color: 0.003 lux @ F1.6
- 120dB True WDR
- Built-in mic & speaker
- Warm Light & IR up to 30m(98ft)
- Motion Detection, Audio Detection
- Cross Line & Intrusion Detection
- IP67

IPC2124LE-ADF28(40)KMC-WL



- 1/3.0" CMOS sensor
- 4MP 2688X1520 25 fps
- Color: 0.003 lux @ F1.6
- 120dB True WDR
- Built-in mic & speaker
- Warm Light & IR up to 30m(98ft)
- Ultra Motion Detection
- Cross Line & Intrusion Detection
- IP67

IPC3612LB-ADF28(40)KC-WL



- 1/2.8" CMOS sensor
- 2MP 1920X1080 30 fps
- Color: 0.003 lux @ F1.6
- 120dB True WDR
- Built-in mic & speaker
- Warm Light & IR up to 30m(98ft)
- Motion Detection, Audio Detection
- Cross Line & Intrusion Detection
- IP67

IPC3614LB-ADF28(40)KC-WL



- 1/3.0" CMOS sensor
- 4MP 2688X1520 25 fps
- Color: 0.003 lux @ F1.6
- 120dB True WDR
- Built-in mic & speaker
- Warm Light & IR up to 30m(98ft)
- Ultra Motion Detection
- Cross Line & Intrusion Detection
- IP67

EasyBasic ColorHunter with warm light

IPC2122LB-AF28(40)K-WL



- 1/2.9" CMOS sensor
- 2MP 1920X1080 30 fps
- Color: 0.005 lux @ F1.6
- Built-in mic
- Warm Light up to 30m(98ft)
- Motion Detection, Audio Detection
- IP67

IPC3612LB-AF28K-WL



- 1/2.9" CMOS sensor
- 2MP 1920X1080 30 fps
- Color: 0.005 lux @ F1.6
- Built-in mic
- Warm Light up to 30m(98ft)
- Motion Detection, Audio Detection
- IP67

EasyStar ColorHunter with warm light

IPC2314LE-ADF28(40)KM-WL



- 1/1.8" CMOS sensor
- 4MP 2688X1520 25 fps
- Color: 0.0005 lux @ F1.0
- 120dB True WDR
- Built-in mic
- Warm Light up to 30m(98ft)
- Ultra Motion Detection
- Cross Line & Intrusion Detection
- Graphene+Metal, IP67

IPC3624LB-ADF28(40)KM-WL



- 1/1.8" CMOS sensor
- 4MP 2688X1520 25 fps
- Color: 0.0005 lux @ F1.0
- 120dB True WDR
- Built-in mic
- Warm Light up to 30m(98ft)
- Ultra Motion Detection
- Cross Line & Intrusion Detection
- Graphene+Metal, IP67

Nighttime Safety Made Easy

Easy Series Family



Headquarters

No.369 Xietong Road, Binjiang District,
Hangzhou 310051, China
Sales: overseasbusiness@uniview.com
Technical Support: globalsupport@uniview.com

global.uniview.com



Easy Series ColorHunter Family

Nighttime Safety Made Easy



202401-01 Version 1.0
Disclaimer: All rights reserved, including final interpretation and content amendent